

POLITECNICO DI BARI



FACT SHEET 2023-2024

INTERNATIONAL RELATIONS OFFICE

POLITECNICO DI BARI I BARI05

Via Amendola, 126/B – 70126 BARI - ITALY



Main references

INSTITUTIONAL ERASMUS+ COORDINATOR

Name, Phone, Email

Dr. Antonella PALERMO

+39 080 596 2179

antonella.palermo@poliba.it

HEAD OF INTERNATIONAL RELATIONS OFFICE

Name, Phone, Email

Dr. Rosilda SAMMARCO

+39 080 596 2582

rosilda.sammarco@poliba.it

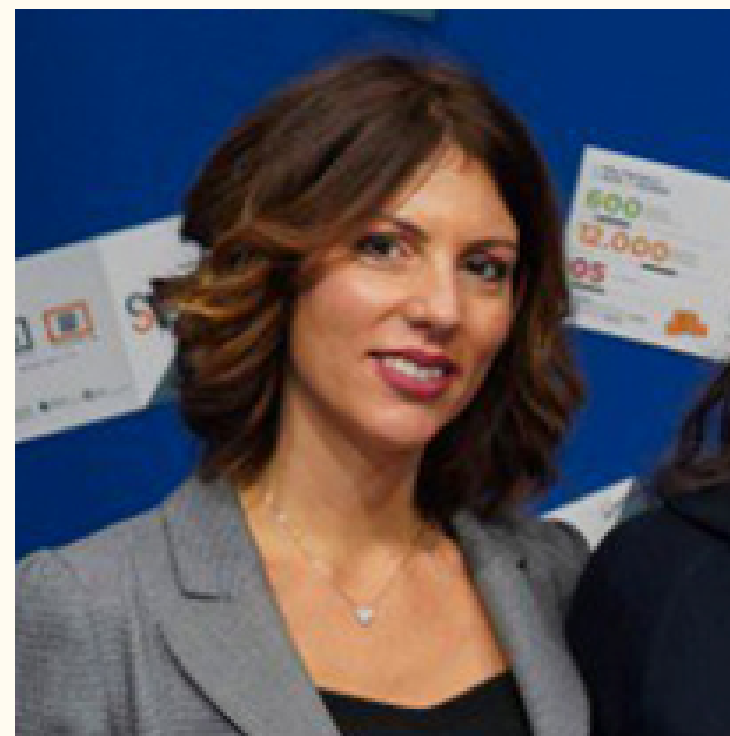
ERASMUS OFFICER

Name, Phone, Email

Dr. Roberta MASCETTI

+39 080 596 2227

roberta.mascetti@poliba.it



OFFICIAL WEBSITE

<http://www.poliba.it>

COURSE CATALOGUE

https://poliba.esse3.cineca.it/Guide/ListaFacoltaCorsi.do;jsessionid=4F3D68146A12D6843566BD2595C53CA2.esse3-poliba-prod-05?cod_lingua=eng

WEBSITE FOR DEPARTMENTAL INFORMATION

<http://dei.poliba.it/DEI-it/index.html>

<https://www.dipartimentoicar.it/>

<http://dmmm.poliba.it/>

<http://www.dicatech.poliba.it/index.php?id=258>





APPLICATION DEADLINES

Full year/Fall semester:
30th June

Spring Semester:
30th November

ACADEMIC CALENDAR

1st Semester (winter): 1st October – 31st January (exams in January-February)

2nd Semester (spring): 1st March – 30th June (exams in July-September)

EMAIL ADDRESS FOR NOMINATIONS

rosilda.sanmarco@poliba.it



Admission documents

- APPLICATION FORM
- LEARNING AGREEMENT
- ACADEMIC TRANSCRIPT OF RECORDS
- B1 ITALIAN OR ENGLISH CERTIFICATE OR ANY PROOF OF ITALIAN OR ENGLISH LANGUAGE KNOWLEDGE
- ID CARD/PASSPORT
- PHOTO



Language of instruction

All courses are taught in Italian, except for the Master Degree Courses in:

- Industrial Design
- Mechanical Engineering
- Telecommunications Engineering
- Informatics Engineering
- Automation
- All Ph.D Courses

which are taught in English.

ITALIAN



Language required

B1 level of Italian and B2 English

LANGUAGE CERTIFICATE

Recommended but not compulsory

LANGUAGE CENTER

<http://www.poliba.it/it/linguistico/centro-linguistico-di-ateneo>

CONTACT PERSON

Dr. Valeria Marangio - languages@poliba.it



Departments and Coordinators



ArCoD
Politecnico di Bari

DIPARTIMENTO DI ARCHITETTURA, COSTRUZIONE
E DESIGN

ARCHITECTURE

INCOMING Students: Prof.ssa Giulia Annalinda NEGLIA
giuliaannalinda.neglia@poliba.it

OUTGOING Students: Prof.ssa Valentina CASTAGNOLO
valentina.castagnolo@poliba.it



Departments and Coordinators



ArCoD
Politecnico di Bari

DIPARTIMENTO DI ARCHITETTURA, COSTRUZIONE
E DESIGN

INDUSTRIAL DESIGN

INCOMING Students: Prof. Francesco MARTELLOTTA
francesco.martellotta@poliba.it

OUTGOING Students: Prof.ssa Annalisa DI ROMA
annalisa.diroma@poliba.it



Departments and Coordinators



DIPARTIMENTO DI INGEGNERIA CIVILE,
AMBIENTALE, DEL TERRITORIO, EDILE E DI CHIMICA

BUILDING ENGINEERING

Prof. Francesco Iannone

francesco.iannone@poliba.it

BUILDING-ARCHITECTURE ENGINEERING

Prof. Carmelo Maria TORRE

carmelomaria.torre@poliba.it

CIVIL AND ENVIRONMENTAL ENGINEERING

Prof.ssa Francesca DE SERIO

francesca.deserio@poliba.it



Departments and Coordinators



**AUTOMATION –
ELECTRICAL – ELECTRONIC – COMPUTER
SCIENCE – TELECOMMUNICATIONS
ENGINEERING**

INCOMING Students: Prof. Vito Giuseppe MONOPOLI
vitogiuseppe.monopoli@poliba.it

OUTGOING Students: Prof. Tiziano POLITI
tiziano.politi@poliba.it



Departments and Coordinators



MANAGEMENT ENGINEERING

INCOMING Students: Prof.ssa Ilaria GIANNOCCARO
ilaria.giannoccaro@poliba.it

OUTGOING Students: Prof.ssa Roberta PELLEGRINO
roberta.pellegrino@poliba.it



Departments and Coordinators



MECHANICAL ENGINEERING

INCOMING Students: Prof. Fulvio LAVECCHIA
fulvio.lavecchia@poliba.it

OUTGOING Students: Prof. Marco TORRESI
marco.torresi@poliba.it





In the Italian university system, each course unit is graded on a scale from 18 to 30 points, (minimum 18 – maximum 30). To pass a course unit, a student must receive a grade of at least 18 points out of 30. “30 e lode” is a special mention for outstanding performance.

As a rule non-passing grades are simply not awarded, and the exam is not registered in the student's career.

For the final degree, a 111-point scale is used. Passing grades are 66 to 110, with the additional superior grade “110 e lode” (110 cum laude). The mark for the final degree is given on the basis of all marks obtained in exams, and on the evaluation of the final thesis.

Italian grading System



European Health Insurance Card, compulsory for all EU students.
A private insurance coverage is highly recommended.

Safety and Health

Immigration Requirements



EU students (except Turkish): identity card or Passport.

Non European and Turkish students must arrive with a student visa, whose application can be made at the Italian Diplomatic and Consular Authorities in your country of residence. In order to find out whether you need an entry visa or not you can simply use the database of the Italian Ministry of Foreign Affairs. You will be asked to enter their nationality, country of residence, length and reason of the stay.



Guide for International Incoming Students

<http://www.poliba.it/it/internazionale/studyingpoliba-international-students>



Accommodation Service

Our Institution doesn't provide reserved places at Student House; students are required to find accommodation by themselves.

The support in finding accommodation can be provided by:

ESN Bari (<http://www.esnbari.org>);

International Community Erasmus Bari (IC BARI), (<https://www.facebook.com/whiteandrederasmusland/?ref=bookmarks>);

CampusX Bari (<http://www.campusxbari.it>);

CercoAlloggio Bari (<https://www.cercoalloggio.com/#!/international>);

HousingAnywhere (<https://housinganywhere.com/s/Bari--Italy>);

Erasmus Play for Incoming and Outgoing students (<https://erasmusplay.com/it/>)



enjoy



#Erasmus+

Politecnico di Bari - International Relations Office