



INFORMATION SHEET EXCHANGE STUDENTS

UNIVERSITY KEY DATA

NAME

Universitat Politècnica de
Catalunya-BarcelonaTECH (UPC)

ERASMUS ID CODE

E BARCELO03

FACULTY KEY DATA

NAME

Barcelona School of Informatics
(FIB)

MAIL ADDRESS

Campus Diagonal Nord, B6
building
C/Jordi Girona, 1-3
08034-Barcelona, Spain

CONTACTS

VICE-DEAN FOR INTERNATIONAL RELATIONS, MOBILITY COORDINATOR & OLA CONTACT

Anna Rio Doval

HEAD OF THE ACADEMIC OFFICE, RESPONSIBLE FOR ADMISSIONS

José Manuel Diéguez

INTERNATIONAL RELATIONS OFFICE (INCOMING & OUTGOING)

Carolina Martín

BILATERAL AGREEMENTS

Tania Polonio



Phone: +34 93 401 07 37

Email: fib.rel.int@upc.edu

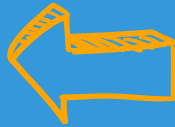


EXCHANGE PROCEDURES

NOMINATION PROCEDURE

Partners must nominate [here](#).
Once students are nominated, we inform them on how to apply.

NOMINATION DEADLINE



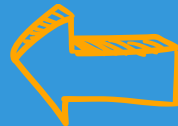
Autumn semester/Full year

May 2nd

Spring semester

November 2nd

APPLICATION DEADLINE



Autumn semester/Full year

June 1st

Spring semester

December 1st

ACADEMIC CALENDAR



SEMESTER PERIODS (INCLUDING EXAM PERIODS)

Autumn semester

From the 1st week of September to late January.

Spring semester

From the 2nd week of February to late June.

ORIENTATION WEEK

The Orientation Week activities will take place PROGRESSIVELY.

Autumn semester: Between the end of July and during September.

Spring semester: Between the end of January and during February.

ACADEMIC OVERVIEW

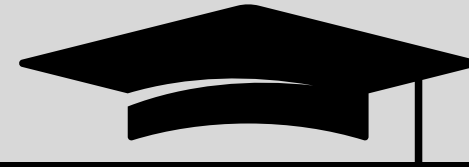
ACADEMIC STRUCTURE

Bachelor = 4 years (240 ECTS)
Master = between 1.5 years (90 ECTS) and 2 years (120 ECTS), depending on the Master

CREDIT SYSTEM AND SEMESTER WORKLOAD

20-30 ECTS recommended.

The UPC uses the European Credit Transfer System (ECTS). One ECTS credit point translates into 25-30 hours of work. Regular full-time study is 30 ECTS per semester.



GRADING SYSTEM

MH Honors
(given exceptionally)

9 - 10.0 Excellent

7 - 8.9 Very good

5 - 6.9 Satisfactory

4 - 4.9 Marginal Fail

0 - 3.9 Fail

NP Not examined

From 0 to 10 (Pass \geq 5)

COURSE PLANNING



MASTER COURSES

Master courses are mostly reserved for master students. To choose them as a Bachelor student, around 160-165 credits must have been passed.

POSSIBILITY OF ATTENDING COURSES FROM DIFFERENT SCHOOLS

Students can attend courses from different schools, but only with school authorization, but they cannot be included in the initial version of the learning agreement.

Note: >50% of credits must be enrolled at FIB.

BACHELOR/MASTER THESIS DETAILS

Applicants for a final thesis during their stay must defend it at FIB in the corresponding periods. Bachelor Thesis: 18 ECTS, Master Thesis: 30 or 18 ECTS. Before their arrival the students must find a supervisor at FIB.



COURSE
CATALOGUE

LANGUAGE REQUIREMENTS



LANGUAGE OF INSTRUCTION

- BSc/MSc in Informatics: ESP/CAT
- BSc in Data science: ESP/CAT
- MSc in Artificial Intelligence: ENG
- MSc in Innovation and Research in Informatics: ENG
- MSc in Data Science: ENG

LANGUAGE REQUIREMENTS

Mobility students must accredit an intermediate level (B1) of Spanish / English, depending on the language of the degree they enroll in.

LANGUAGE COURSES
FOR
EXCHANGE STUDENTS



OTHER DOCUMENTS

ONLINE LEARNING AGREEMENT

FIB is connected to the EWP platform, therefore we can validate LAs digitally. However, we will not sign any OLA until the student is officially accepted and registered at FIB.

TRANSCRIPT OF RECORDS

3 weeks after the semester ends. Transcripts can be downloaded online through the mobility platform.

There is no possibility of retaking exams

PRACTICAL INFORMATION



INSURANCE



Applicants must book a private insurance that covers them for these services during their stay:

- hospitalisation
- medical expenses
- civil liability and repatriation

The European Health Insurance Card is not enough.

VISA



Applicants from EU do not need a visa but need to get the NIE. Students from countries outside of the EU who come to study for longer than 3 months must apply for a student visa.

ACCOMMODATION



Accommodation is not provided by the school/university. However, [this link](#) might be helpful.

COSTS OF LIVING



International students must foresee spending at least 1200€ a month on living expenses.

MORE PRACTICAL INFORMATION

[STUDENTS WITH DISABILITIES AND SPECIAL NEEDS](#)

[MORE INFORMATION FOR EXCHANGE STUDENTS](#)

[FIB WEBSITE](#)

*International
Partnerships*

205
Universities

42
Countries

1888
Satisfied
students

